



## BRANCH LOCATIONS

### NORTHWEST | CORPORATE

7032 South 196th St.  
 Kent, WA 98032  
 Ph: (253) 872-0141  
 Fx: (253) 872-8710  
 (800) 248-8498  
 stevec@americanpiledriving.com  
 kellyg@americanpiledriving.com  
 chrisw@americanpiledriving.com

### WEST COAST

2985 Loomis Rd.  
 Stockton, CA 95205  
 Ph: (209) 942-2166  
 Fx: (209) 942-2455  
 (888) 245-4401  
 chrisc@americanpiledriving.com

### GULF REGION

3975 FM Hwy 1485  
 Conroe, TX 77306  
 39266 Doyle Dr., Ste. A  
 Gonzales, LA 70737  
 Ph: (936) 271-1044  
 Fx: (936) 271-1046  
 (800) 596-2877  
 joew@americanpiledriving.com

### NORTHEAST

401 Hartle St.  
 Sayreville, NJ 08872  
 Ph: (732) 432-6604  
 Fx: (732) 432-6608  
 (888) 217-7524  
 billz@americanpiledriving.com  
 paulk@americanpiledriving.com

### MID-WEST

50 Gerber Industrial Dr.  
 St. Peters, MO 63376  
 Ph: (636) 397-8400  
 Fx: (636) 278-4278  
 (877) 296-8044  
 Loganh@americanpiledriving.com

### MID-ATLANTIC

500 Newtown Rd., #200  
 Virginia Beach, VA 23462  
 Ph: (757) 518-9740  
 Fx: (757) 518-9741  
 (866) 399-7500  
 jimmyd@americanpiledriving.com

### SOUTHEAST

1345 Industrial Park Rd.  
 Mulberry, FL 33860  
 Ph: (863) 324-0378  
 Fx: (863) 318-9409  
 (800) 570-3844  
 jimb@americanpiledriving.com  
 jimc@americanpiledriving.com  
 wallyb@americanpiledriving.com

### CANADA

1002 7th Street  
 Nisku, Alberta T9E 7P2  
 Ph: (780) 474-9888  
 (855) 328-9888  
 ericl@americanpiledriving.com

### MEXICO & CENTRAL

Avenida Periferico Sur 7800  
 Sta. Ma Tequetexpan  
 Tlaquepaque, Guadalajara Jalisco  
 Mexico CP. 45601  
 Ph: (253) 368-3911  
 Fx: (253) 872-8710  
 +1 (877) 457-5022  
 davidm@americanpiledriving.com

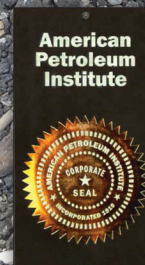
### PILING PRODUCTS

24430 FM 1488, Ste. A  
 Magnolia, TX 73355  
 Ph: (936) 372-9760  
 mattf@apedrilling.com



# APE HD™ PILING

## DEEP FOUNDATION SOLUTIONS



The APE product line is protected by, but not limited to the following patent numbers:  
 5088565A, 5117925A, 5263544A, 5529132A, 5544979A, 5609380A, 5653556A,  
 5794716A, 6039508A, 6386295B1, 6427402B1, 6431795B2, 6447036B1, 6543966B2,  
 6648556B1, 6672805B1, 6732483B1, 6736218B1, 6896448B1, 6908262B1, 6942430B1,  
 6988564B2, 7168890B1, 7392855B1, 7694747B1, 7708499B1, 7824132B1, 7854871B1,  
 7913771B2, 7950876B2, 7950877B2, 8070391B2, 8181713B2, 8186452B1, 8434969B2,  
 8496072B2, 2009020005A1. For a more detailed information and a more comprehensive  
 list of APE patents please visit the website at [www.apevibro.com/ver2/APEpatents.asp](http://www.apevibro.com/ver2/APEpatents.asp).

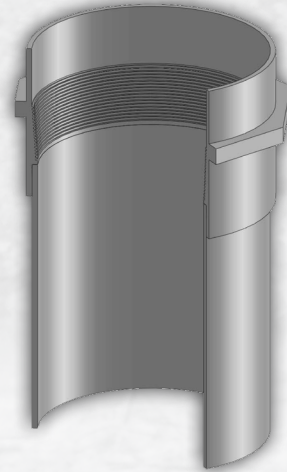
**800-248-8498**

[WWW.AMERICANPILEDIVING.COM](http://WWW.AMERICANPILEDIVING.COM)



**800-248-8498**

[WWW.AMERICANPILEDIVING.COM](http://WWW.AMERICANPILEDIVING.COM)



### THREADED COUPLER WITH SOCKET DRIVE TECHNOLOGY

- COUPLERS WITH THE APE PATENTED THREAD CONNECTION ELIMINATES MAKE UP PAST THE MIDPOINT
- ADD UNLIMITED ADDITIONAL PILE SECTIONS
- ALL CUT OFF COUPLERS ARE PROPERTY OF APE

### SHAFT SECTION

- DOM SEAMLESS API CASING
- SHAFT SECTIONS FROM 4 TO 40 FOOT LENGTHS

### GEO-EXCHANGE TECHNOLOGY

- APE HD™ HELICAL PILE MATERIAL CAN BE USED WITH APE PATENT PENDING CLSCW TECHNOLOGY TO HEAT AND COOL STRUCTURES USING THE STEEL PILE FOUNDATION AND A GROUND SOURCE HEAT PUMP

### THREADED ENDS

- ADD UNLIMITED ADDITIONAL PILE SECTIONS

### HELICAL PLATES

- 1 HELIX FOR EACH PILE, OR MULTIPLE 10" TO 36" O.D. CLOCKWISE HELICAL PLATES
- 1/2" TO 2.0" THICK
- PITCH 4" TO 12"
- TENSILE STRENGTHS FROM 50,000 PSI TO 100,000 PSI

### PILE TIPS

- VARIOUS OPEN ENDS
- VARIOUS CLOSED END DIGGING TIPS
- GEO-EXCHANGE DOUBLE-PLATED CLOSED-END
- TIPS FOR GROUT INJECTION

### SHAFT SECTION SPECIFICATIONS

API in lbs / ft	Units	API 13.5	API 23	API 29	API 53	API 60	API 68
Diameter	in	4.5	5.5	7	9.625	11.75	13.375
	mm	114.30	139.70	177.80	244.48	298.45	339.73
Thickness	in	0.290	0.415	0.403	0.472	0.489	0.514
	mm	7.37	10.54	10.24	11.99	12.42	13.06
Inside Diameter	in	3.92	4.67	6.184	8.681	10.772	12.347
	mm	99.57	118.62	157.07	220.5	273.61	313.61
Area (A)	in <sup>2</sup>	3.83	6.63	8.45	13.57	17.30	20.77
	mm <sup>2</sup>	2,471	4,277	5,451	8,756	11,161	13,400
Section Modulus (Z)	in <sup>3</sup>	3.79	7.84	13.16	33.40	46.76	60.51
	mm <sup>3</sup> / 10 <sup>3</sup>	62.18	128.50	215.70	547.50	766.30	991.80
Moment of Inertia (I)	in <sup>4</sup>	8.54	21.57	46.07	160.80	274.70	404.70
	mm <sup>4</sup> / 10 <sup>6</sup>	3.55	8.98	19.18	66.93	114.40	168.50

Yield API L-80 to API P-110 (80,000 to 110,000 psi) - API ISO Certified Manufacturer

